

NORWICH and DISTRICT ANGLER'S ASSOCIATION AND CONSULTATIVE

Improve Access to Environment Agency Controlled Banks on the Broads

Bankside Management Work Proposal (Rivers Ant & Thurne)

VERSION 1.0

Issue date: 23/02/2021

Change History

<i>Version No. (latest first)</i>	<i>Revision Date (dd.mm.cyyy)</i>	<i>Cause of Revision</i>	<i>Last Revised By</i>	<i>Revision Details</i>	<i>Changes marked? (Y/N)</i>
0.1	19/02/2021	Initial write	Jason Brewster		N
0.2	22/02/2021	Feedback from Tony Gibbons	Jason Brewster	Update Title page & add Next Steps section	N
1.0	23/02/2021	Feedback from Tony Gibbons	Jason Brewster	Update section 2 summary	N

Contents

Contents	2
1 Introduction	3
1.1 Purpose.....	3
1.2 Scope.....	3
1.2.1 River Thurne, Potter Heigham.....	3
1.2.2 River Thurne, Womack Water	3
1.2.3 River Ant, Ludham Bridge	3
2 Proposed Work.....	4
2.1 River Thurne, Potter Heigham.....	5
2.1.1 Figure A1: Aerial map of sections 1-3	5
2.1.2 Figure A2: Image of section 1 start.....	6
2.1.3 Figure A3: Image of section 1 middle	6
2.1.4 Figure A4: Image of section 1 end.....	7
2.1.5 Figure A5: Image of section 2.....	7
2.1.6 Figure A6: Image of section 2 rubbish.....	8
2.1.7 Figure A7: Image of section 3.....	8
2.1.8 Figure A8: Aerial map of section 4	9
2.1.9 Figure A9: Image of section 4.....	9
2.1.10 Figure A10: Aerial map of sections 5-8	10
2.1.11 Figure A11: Image of section 5 rubbish.....	11
2.1.12 Figure A12: Image of section 6 start.....	11
2.1.13 Figure A13: Image of section 6 rubbish.....	12
2.1.14 Figure A14: Image of section 7 start.....	12
2.1.15 Figure A15: Image of section 7 end.....	13
2.1.16 Figure A16: Image of section 8 start.....	13
2.1.17 Figure A17: Image of section 8 start.....	14
2.2 River Thurne, Womack Water	15
2.2.1 Figure B1: Aerial map of sections.....	15
2.2.2 Figure B2: Image of section 1 start.....	16
2.2.3 Figure B3: Image of section 2 start.....	16
2.3 River Ant, Ludham Bridge	17
2.3.1 Figure C1: Aerial map of sections	17
3 Next Steps.....	18

1 Introduction

1.1 Purpose

This document details work required to clear indicated sections of riverbank in preparation for use by anglers.

1.2 Scope

1.2.1 River Thurne, Potter Heigham

This section relates to riverbank accessed from Potter Heigham, upstream of A149 bypass bridge on the southern bank.

1.2.2 River Thurne, Womack Water

This section accessed from end of Cold Harbour Lane, Ludham. Riverbank is to the left of car park, upstream towards Womack Water.

1.2.3 River Ant, Ludham Bridge

This section relates to riverbank accessed from Ludham Bridge; Northern bank upstream of A1062 Norwich Road bridge.

2 Proposed Work

The following sections describe the work required to improve the specified riverbanks for the benefit of recreational visitors accessing these areas on foot.

At present the amount of rubbish in some areas is not just an eyesore but poses a risk to the flora and fauna and its associated wildlife. The scale of the problem also prevents safe access to the river by anglers and other water users. The removal of this rubbish will not just improve the wildlife habitat it will also provide a more pleasing environment to anyone accessing the riverbank whether they be local residents or visiting holidaymakers.

The main focus of this work will be clearing rubbish from the riverbank. As detailed in the following sections rubbish in this context may entail general litter, garden waste, abandoned white goods & discarded building materials.

Once this rubbish has been cleared the bankside will be deemed safe to facilitate access to the river itself for use by anglers. This work will entail cutting sections of reed or undergrowth immediately adjacent to the water. These sections will be 3m in width with a similar depth to enable an angler to sit comfortably beside the river. An associated pathway will be cleared to facilitate access from the footpath to these cleared "pegs/swims".

2.1 River Thurne, Potter Heigham

Given the proximity of this section of river to residential properties and the resulting footfall there is a considerable amount of rubbish to be cleared.

2.1.1 Figure A1: Aerial map of sections 1-3

Sections numbered as approached from Potter Heigham heading East towards Martham Boats.



Section 3

Dimensions: 12m (along river) x 9m

Clear discarded metal & cut reed

Provision of 1 peg for angling

See photo A7

Section 2

Dimensions: 25m (along river) x 9m

Clear discarded metal & cut reed

Provision of 2 pegs for angling

See photos A5 & A6

Section 1

First section of reeds upstream of stagings

Dimensions: 55m (along river) x 15m [30m to tree then 15m to boundary fence]

Cut reed

Provision of 3-4 pegs for angling

See photos A2, A3 & A4

2.1.2 Figure A2: Image of section 1 start

Start of section 1 looking upstream (photo taken 18th Feb).



2.1.3 Figure A3: Image of section 1 middle

Middle of section 1 looking downstream (photo taken 18th Feb).



2.1.4 Figure A4: Image of section 1 end

End of section 1 looking downstream (photo taken 18th Feb).



2.1.5 Figure A5: Image of section 2

Section 2 looking upstream (photo taken 18th Feb).



2.1.6 Figure A6: Image of section 2 rubbish

Sheet metal at end of section 2 (photo taken 18th Feb).



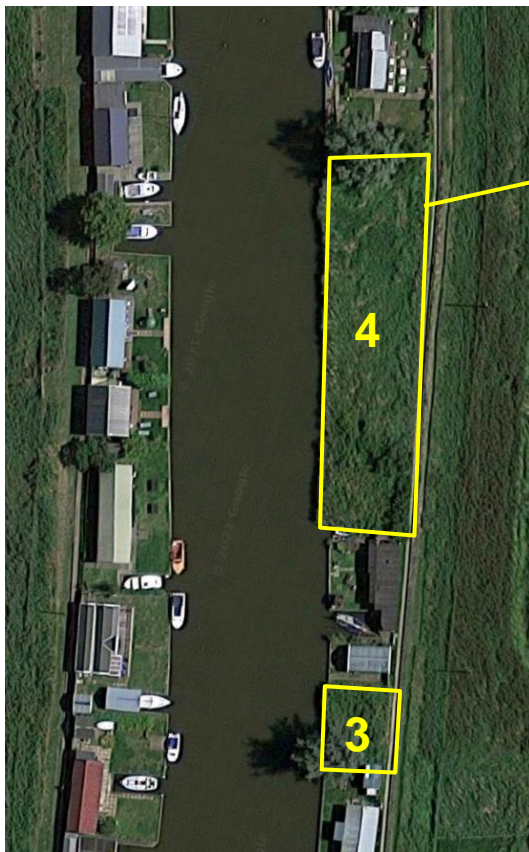
2.1.7 Figure A7: Image of section 3

Section 3 looking upstream (photo taken 18th Feb).



2.1.8 Figure A8: Aerial map of section 4

Sections numbered as approached from Potter Heigham heading East towards Martham Boats.



Section 4

Dimensions: 50m (along river) x 9m

Clear discarded metal & cut reed

Provision of 3 pegs for angling

See photo A9

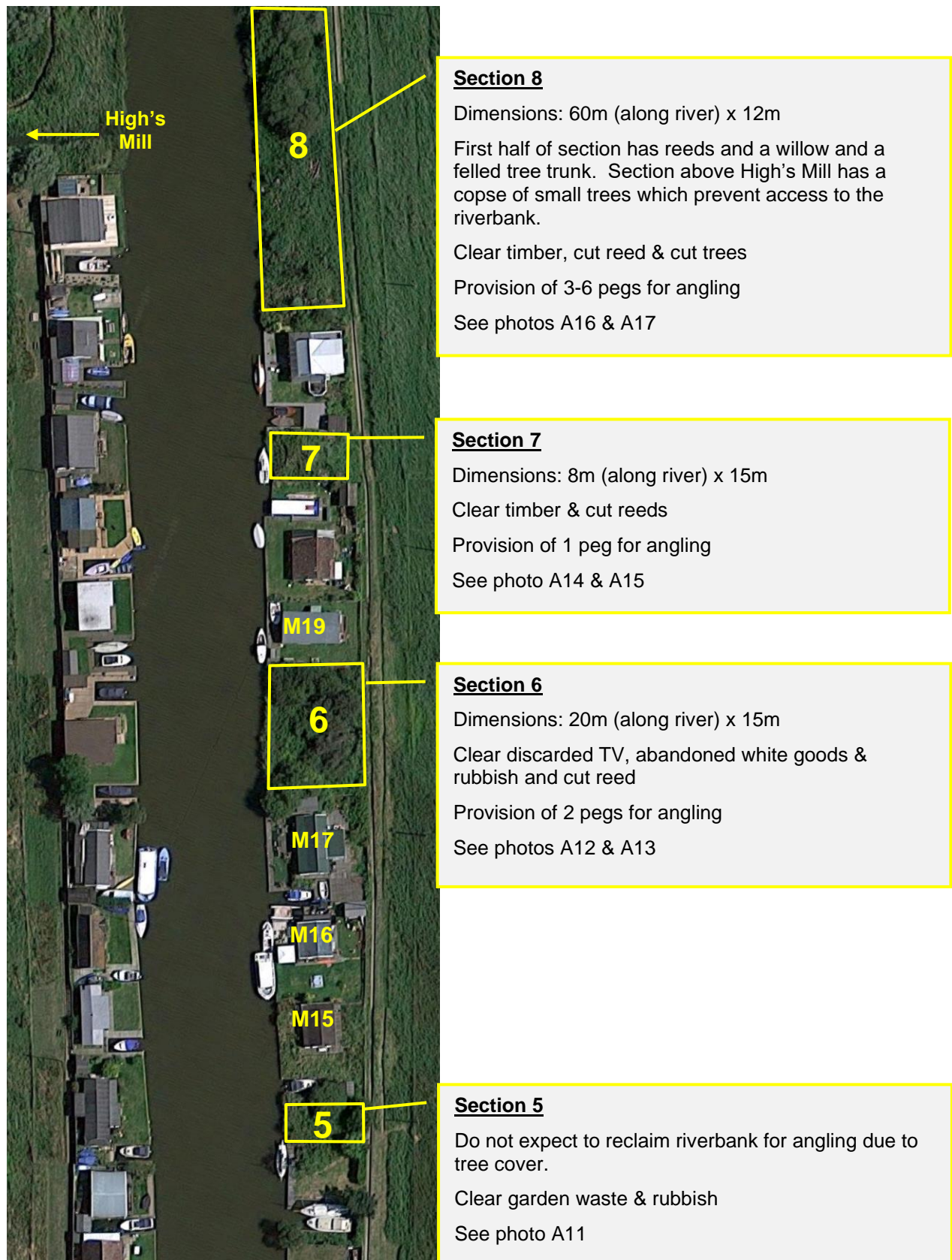
2.1.9 Figure A9: Image of section 4

Section 4 looking downstream (photo taken 18th Feb).



2.1.10 Figure A10: Aerial map of sections 5-8

Sections numbered as approached from Potter Heigham heading East towards Martham Boats.



2.1.11 Figure A11: Image of section 5 rubbish

Cut grass & garden waste thrown into scrub along pathway plus plastic water carrier & lawn mower behind fence on left hand side (photo taken 18th Feb).



2.1.12 Figure A12: Image of section 6 start

Start of section 6 (photo taken 18th Feb).



2.1.13 Figure A13: Image of section 6 rubbish

Rubbish within trees visible from pathway at end of section 6 (photo taken 18th Feb).



Another abandoned
fridge/freezer

2.1.14 Figure A14: Image of section 7 start

Start of section 7 showing abandoned fencing/roofing timbers (photo taken 18th Feb).



2.1.15 Figure A15: Image of section 7 end

End of section 7 (photo taken 18th Feb).



2.1.16 Figure A16: Image of section 8 start

Start of section 8 to left of first willow (photo taken 18th Feb).



2.1.17 Figure A17: Image of section 8 start

Start of section 8 to right of first willow (photo taken 18th Feb).

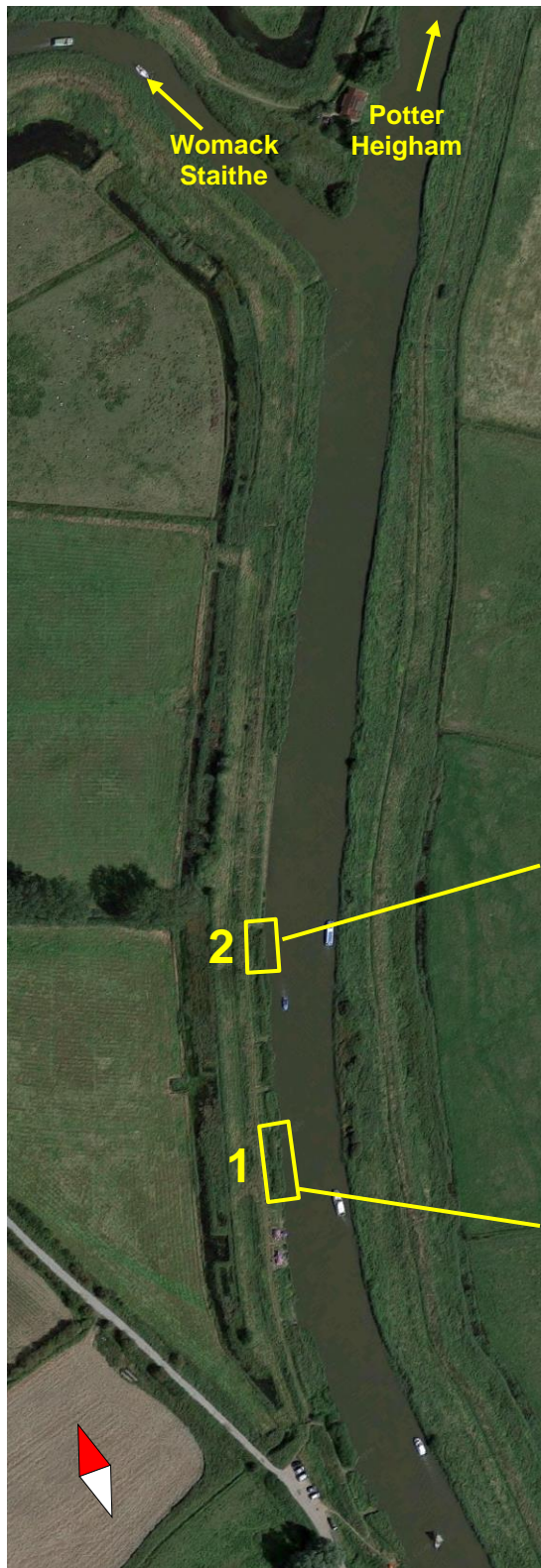


2.2 River Thurne, Womack Water

This stretch of river requires removal of litter, reeds to be cut and No Mooring signs to be displayed.

2.2.1 Figure B1: Aerial map of sections

Sections numbered as approached from Cold Harbour car park heading North towards Womack Water.



Section 2

Create access to water at southern end of steel piling

Dimensions: 10m (along river) x 8m

Clear brambles & reeds.

Provision of 1 peg for angling

See photo B3

Section 1

Dimensions: 20m (along river) x 10m

Clear brambles & reeds.

Provision of 2 pegs for angling

See photo B2

2.2.2 Figure B2: Image of section 1 start

Start of section 1 looking upstream (photo taken 18th Feb).



2.2.3 Figure B3: Image of section 2 start

Start of section 2 at end of pilings (photo taken 18th Feb).

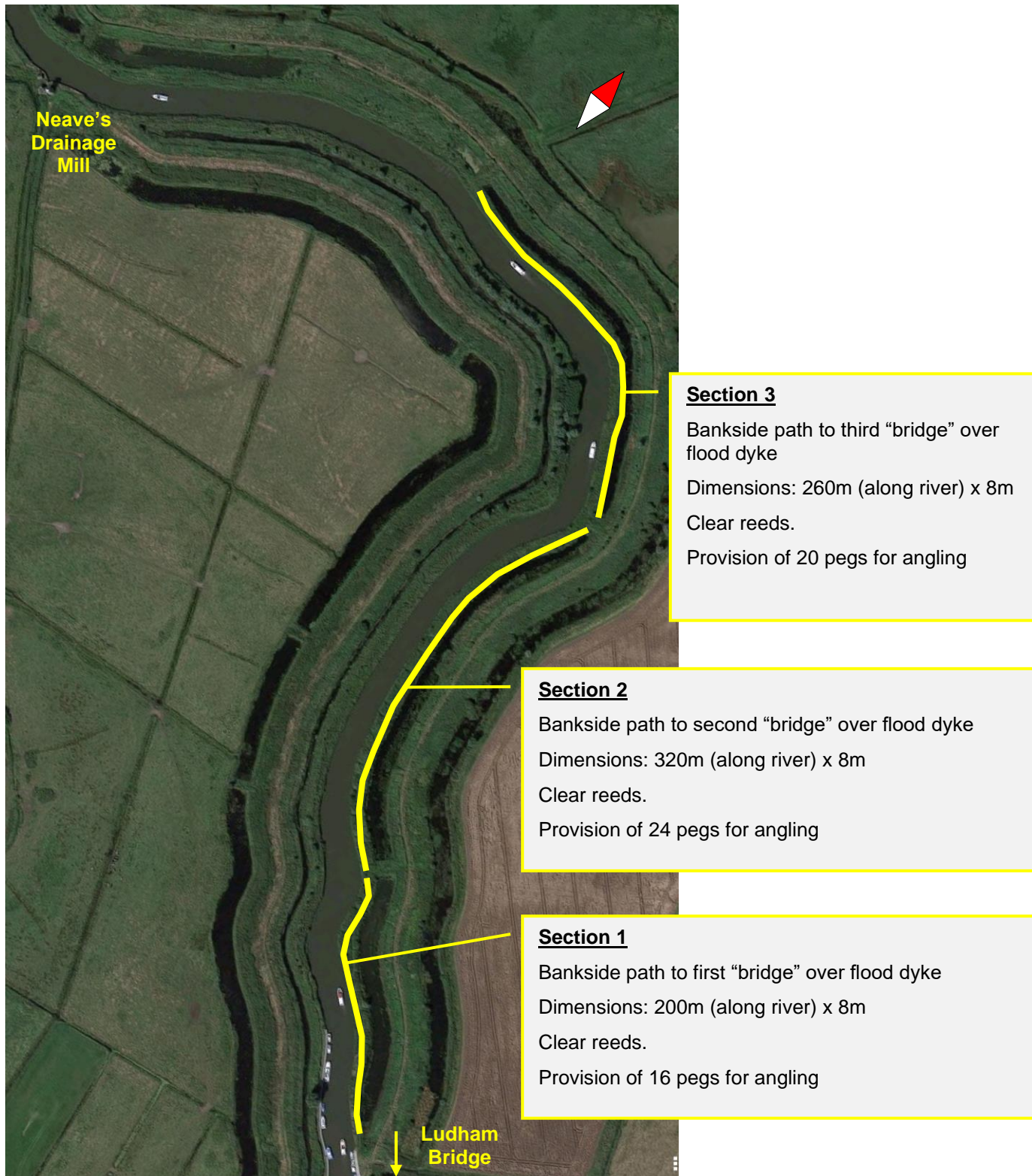


2.3 River Ant, Ludham Bridge

This stretch of river requires removal of litter and reeds to be cut.

2.3.1 Figure C1: Aerial map of sections

Sections numbered as approached from Ludham Bridge car park heading North towards How Hill.



3 Next Steps

Approval from Broads Local Access Forum

Authorisation from Broads Authority

Authorisation from Environment Agency

Risk assessments

Costings