




# Wensum Catchment Ecology Group

22<sup>nd</sup> May 2023

A photograph of a river flowing through a lush green landscape. The river is surrounded by tall reeds and grasses on the banks, with trees in the background. The water is clear and reflects the surrounding greenery.

Agenda  
Previous Actions  
Fish Recovery Plan  
Invertebrate Monitoring & Strategy  
River Flow Impacts  
Other research projects

## Fishery Recovery Plan

We have agreed a plan that has a number of milestones to ensure any future stocks can sustain themselves.

- ✓ Define the area of focus
- ✓ Define current Density
- Understand the current health concerns
  - EA Labs
  - PhD Analysis
- Define the cause of these concerns
  - ?
  - ?
- Define and improve the habitat
- Reach agreement with Landowners
- Define monitoring plan
- Reach agreement on stocking protocol



School Holidays Foundry Bridge Norwich 1972

# Fishery Recover Plan

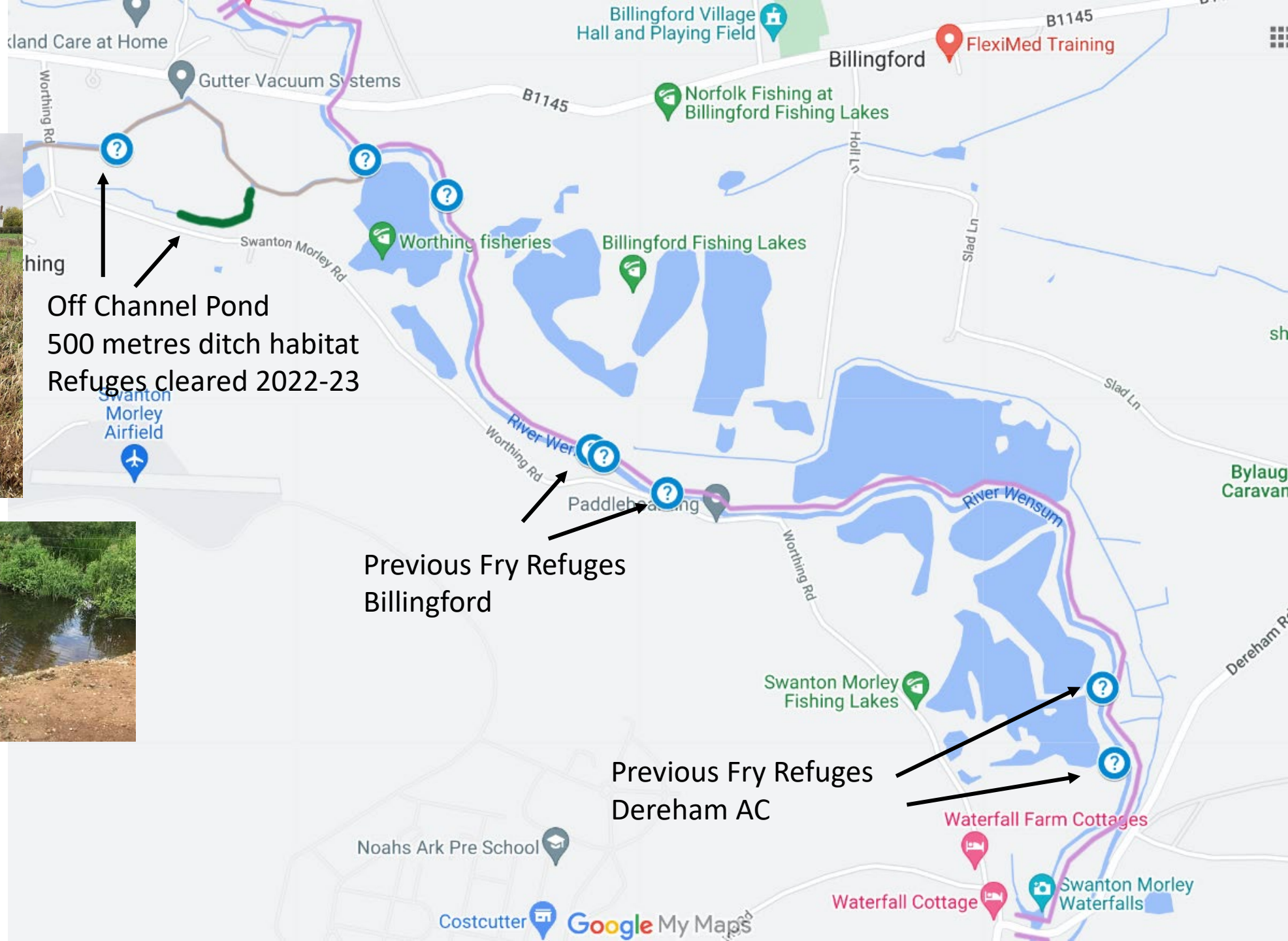


Off Channel Pond  
500 metres ditch habitat  
Refuges cleared 2022-23



Previous Fry Refuges  
Billingford

Previous Fry Refuges  
Dereham AC





# Building a Supporting Structure

## 1 ARMI hub coordinator(s)

Dan Hoare & David Harper

- maintains/expands monitoring groups
- contact at catchment/regional level
- coordinates training and on-going support, incl. funding

## 2 ARMI group coordinator

Jeremy Hadaway

- contact for the group, statutory agency and Riverfly Partnership
- maintains monitoring activity and ensures data sharing
- verifies online data submissions

## 3 second contact point for ARMI group

Dennis Willis

- supports coordinator

## 4 Ecology Contact

John Findlay at Environment Agency

- liaison with the group coordinator
- site registration & trigger levels
- training support
- ensures statutory response to incidents

## 5 Riverfly Partnership ARMI Coordinator

Trine at Riverflies Partnership

- support, ongoing training & communication





# Building a Supporting Structure Sites and Volunteers - Wensum Hub

Site	Location	Monitors.	
Tat 1 (Tatterford Common)	TF 86450 27975 W3W: otherwise.starting.laugh	DH/RB*	
Wensum Raynham Hall Church Bridge	TF8787525399 slang.freely.niece	DH/RB/?	
Wensum (SMNR)	TF89650 30325 elsewhere.headers.incur	DH/RB*	
Wensum Fakenham 1	TF 92220 29233 gardens.engineers.widgets	DH/TV/?	
Wensum Fakenham 2	?	TV/?	New site?
Wensum Pensthorpe	?	DH**	
Blackwater/Worthing	TG 00301 19975 reworked.overused.scared	CH/GG/DW**	
Wensum Bintry	TF 99465 24000 amphibian.prowl.shops	JH/KF/RW*	
Wensum Swanton Morley	TG 01684 19393 workbench.juror.trials	DW/RG/GG/RW/CH **	
Wensum Sparham	TG 05716 18442 crowd.dressings.declares	CH/GG*	
Wensum Lyng	TG 07721 17637 jiffy.walnuts.fractions	CH/JH/GG*	
Wensum Lenwade	TG1074218715 bolsters.meatballs.scam	DW/CH/GG*	
Wensum Ringland	TG 13998 13767	JH/KF	Old site to restart
Wensum Attlebridge	TG 12669 16794	??	Old site to restart?
Wensum Costessey	TG 17587 13239	??	Old site to restart?
Tud 1 Gunton Lane	TG 19279 10837 Vital.sands.urban	DW?/GR/RR/EC	New site – tried by former sampler/DW
Tud 2 Queen Hills	TG1532411616 masses.basket.hourglass	DW?/GR/RR/EC	?



## Future Strategy and Approach

Riverfly AMRI 8 Taxa Groups

Riverfly + AMRI 33 Taxa Groups

Smartrivers 40 Taxa Groups

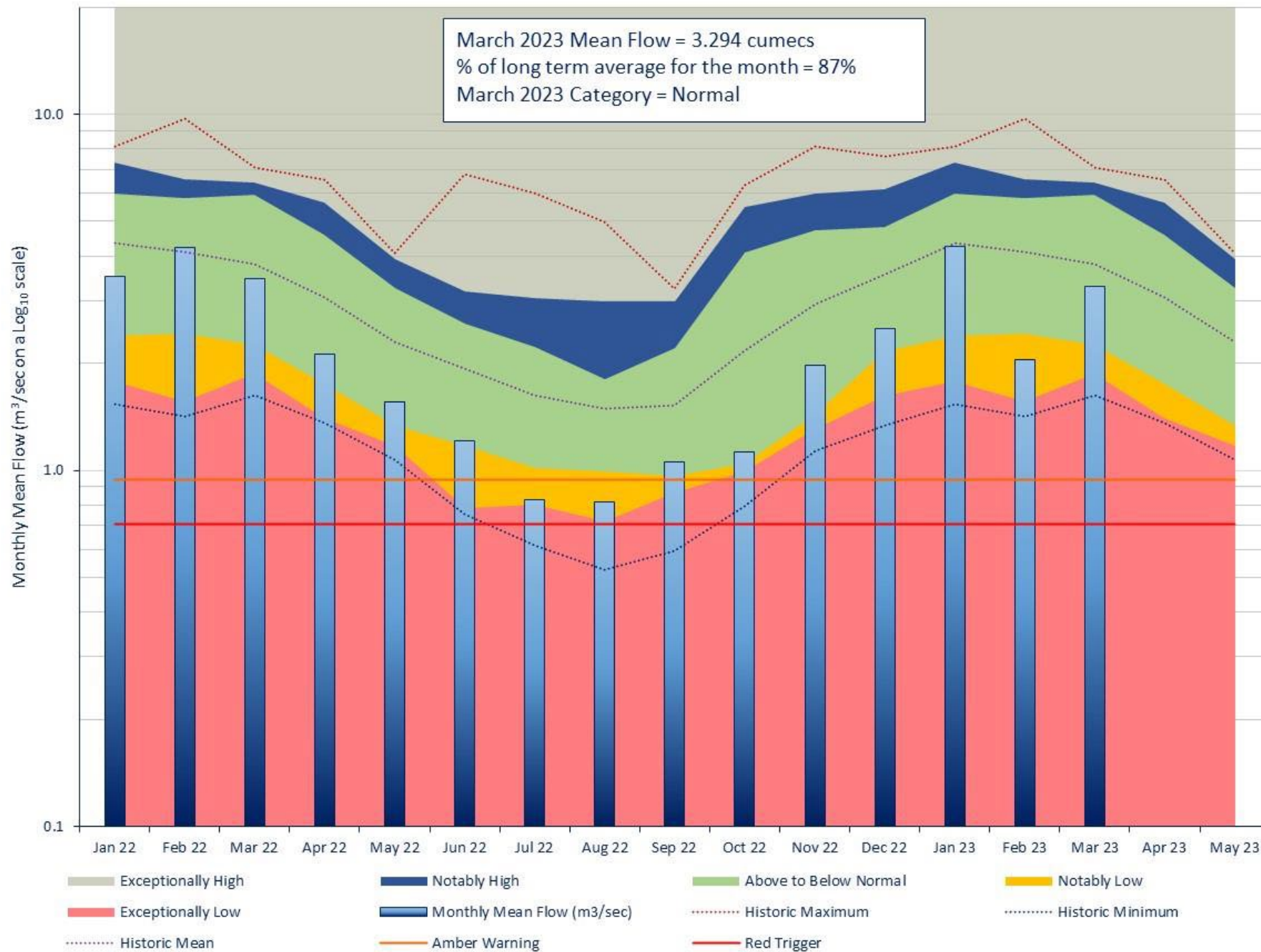
eCountability 20 Taxa Groups





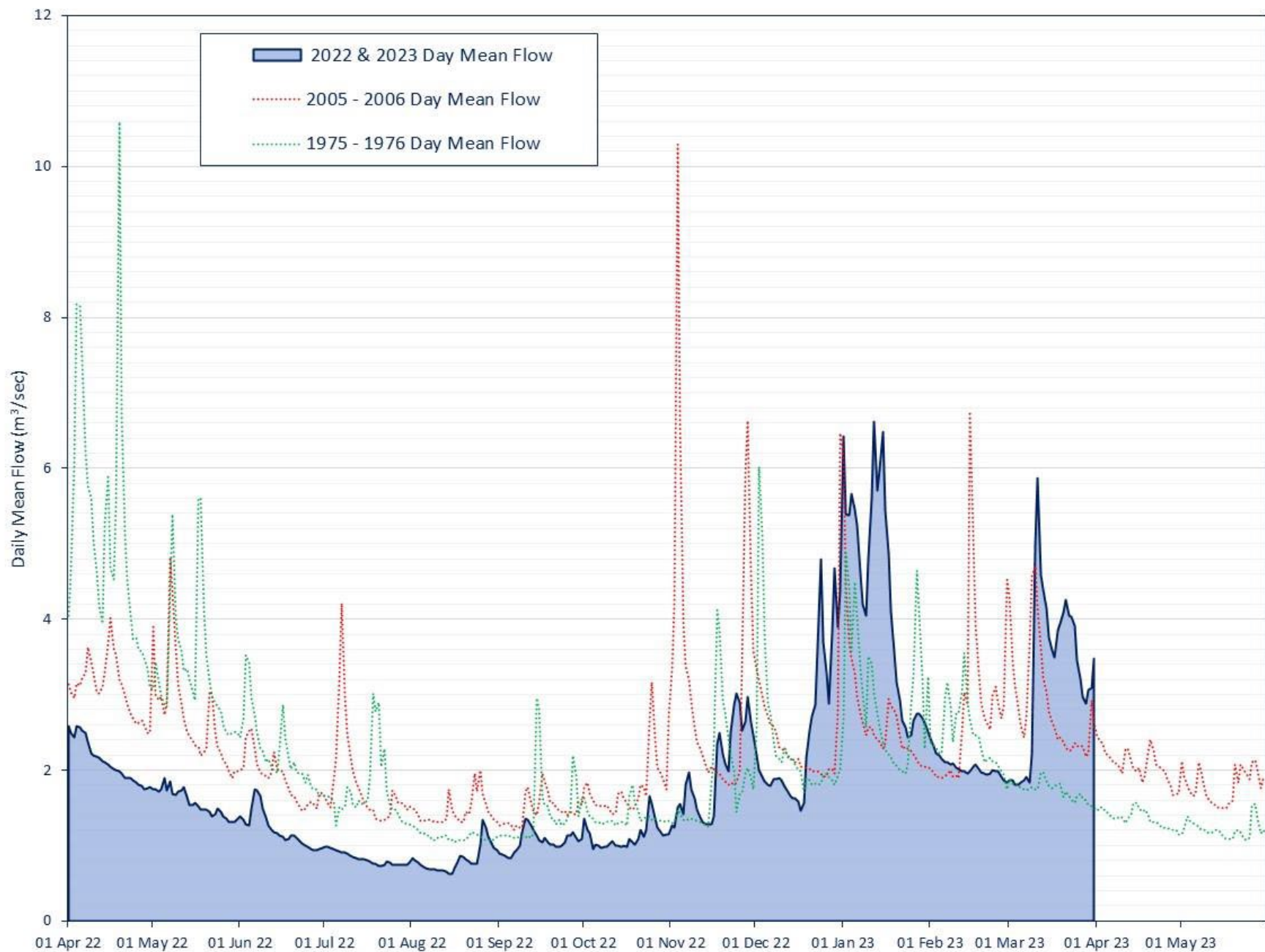
# Long Term Flow Comparison Swanton Morley

River Wensum at Swanton Morley Flow Categorisation 1970-2017 (Featured Years - 2019 to 2020)

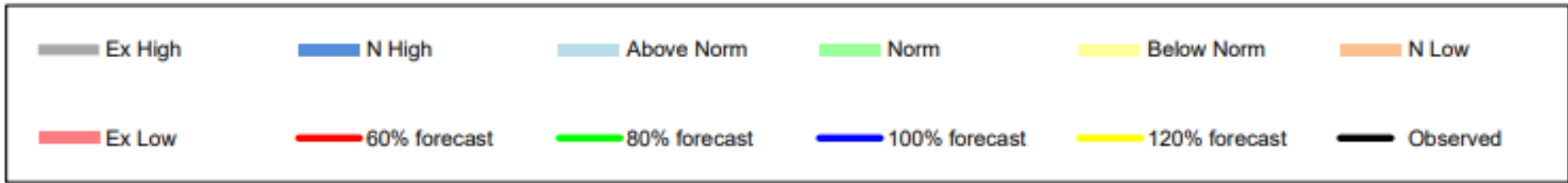
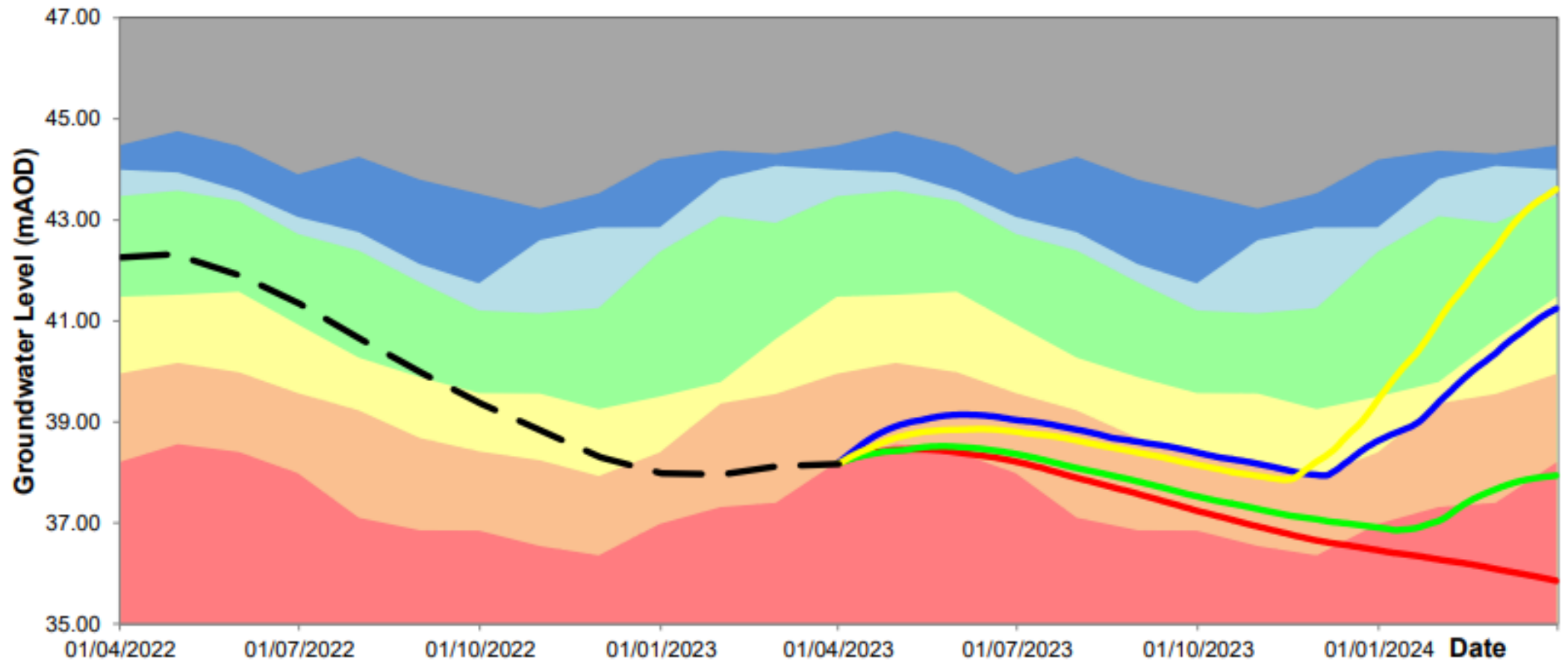


River Wensum at Swanton Morley (12 Month Hydrograph)

# Actual Flow Comparison Swanton Morley



**BIRCHAM NEWTON TF73/092 - NW Norfolk Chalk:**  
**Actual groundwater levels with forecast groundwater levels from 01/04/2023 for the next 12 months**  
**using percentage of average rainfall**



# Groundwater impact on the River Tat and upper Wensum

Evidenced by:

Poor Riverfly Scores

Dead Mussels and Snails

Exceptional low flows

EA's own groundwater charts

Yet Fakenham shows good flows

Where is the water going?

Can an reassessment be made on the licenced and actual abstraction volumes

How is the flow actually assessed today